

ICON

RESIDENCE

AMMAN - JORDAN

PRIME LOCATION IN ABDOUN

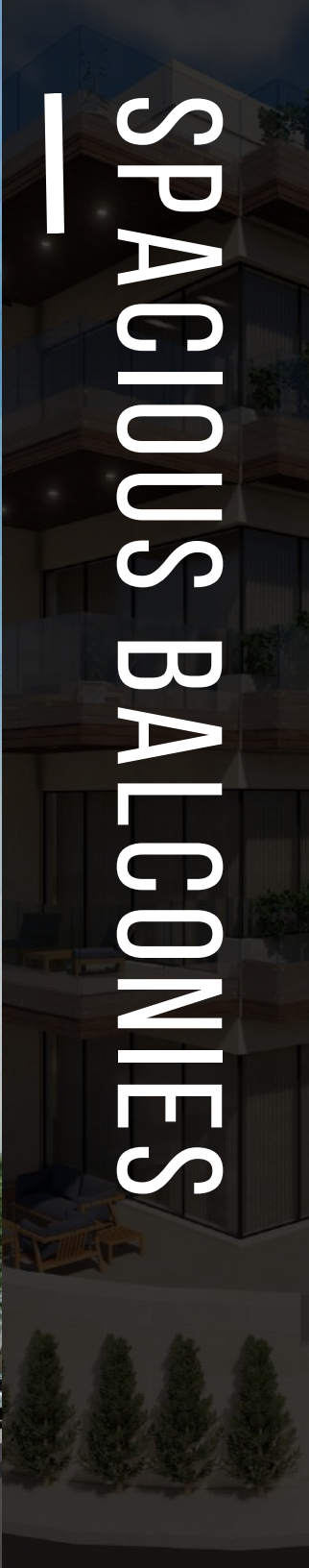
ICON
RESIDENCE
AMMAN - JORDAN





LAND ON THREE ROADS





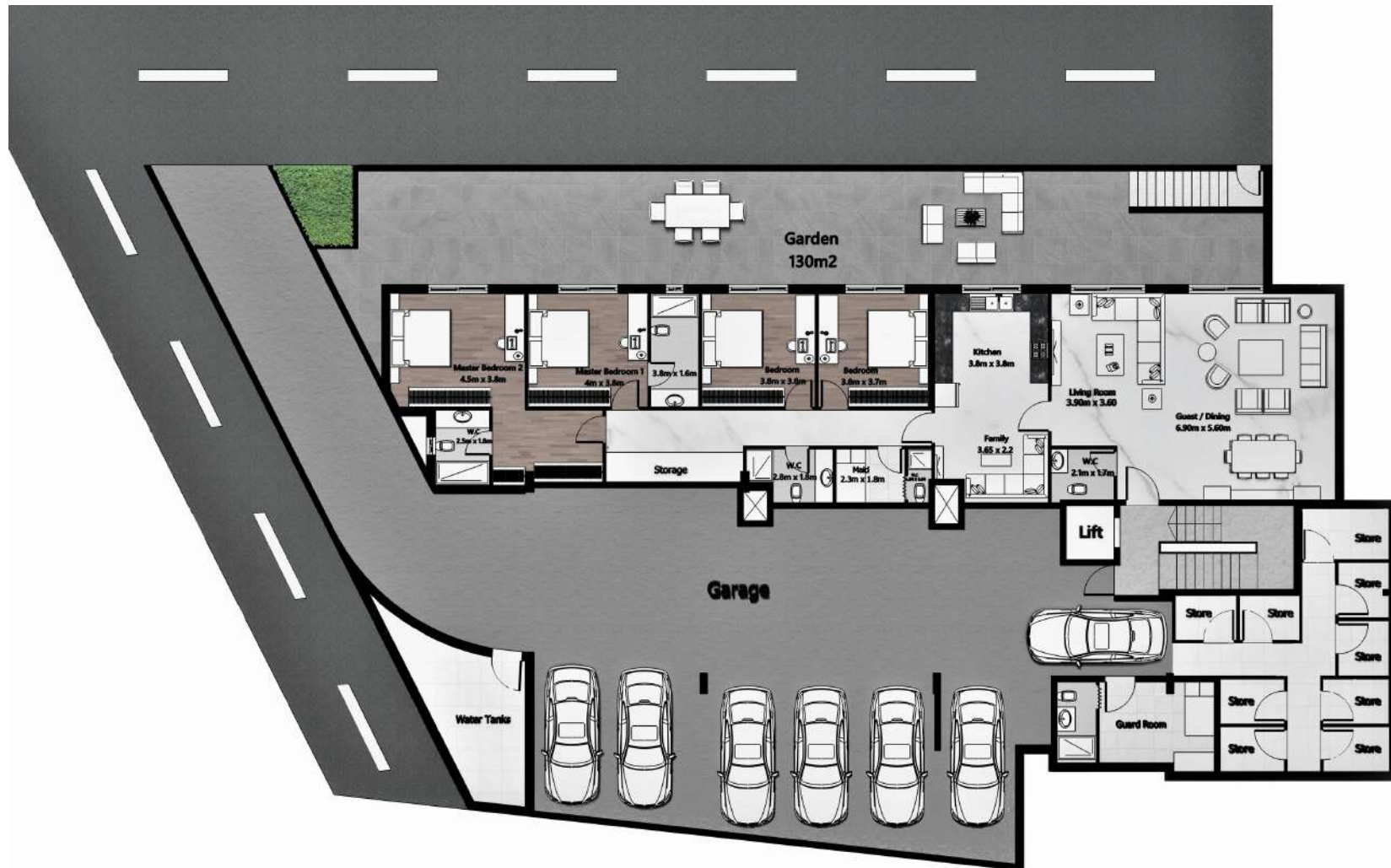
SPACIOUS BALCONIES

BASEMENT FLOOR



APARTMENT #B01 | 250 M2

SERVICES | PARKING & STORES



*AREAS LISTED ABOVE = GROSS AREA

GROUND FLOOR

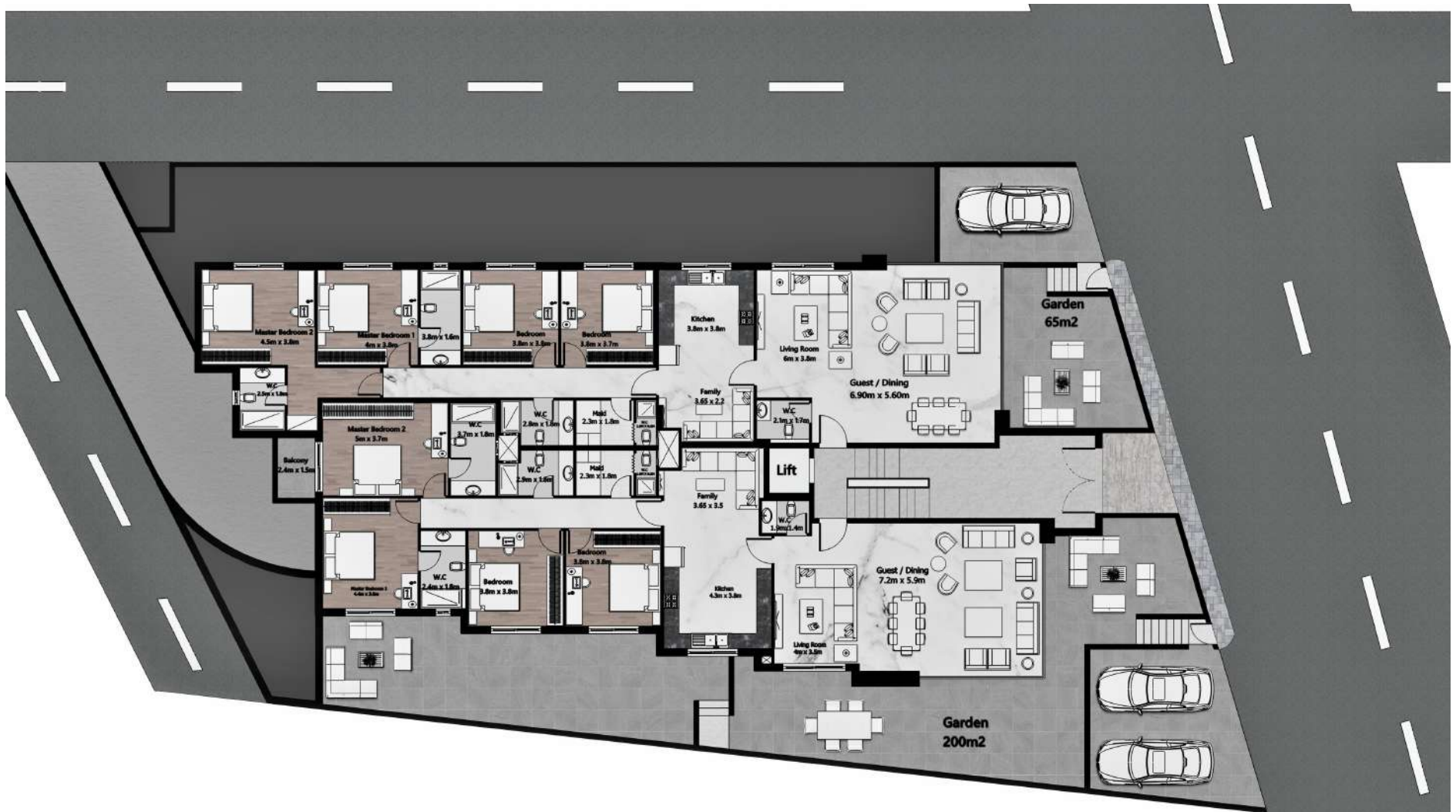


APARTMENT #G01

| 260 M2

APARTMENT #G02

| 250 M2



*AREAS LISTED ABOVE = GROSS AREA

FIRST FLOOR



APARTMENT #F01 | 260 M²

APARTMENT #F02 | 250 M²



*AREAS LISTED ABOVE = GROSS AREA

SECOND FLOOR



APARTMENT #S01 | 260 M2

APARTMENT #S02 | 250 M2



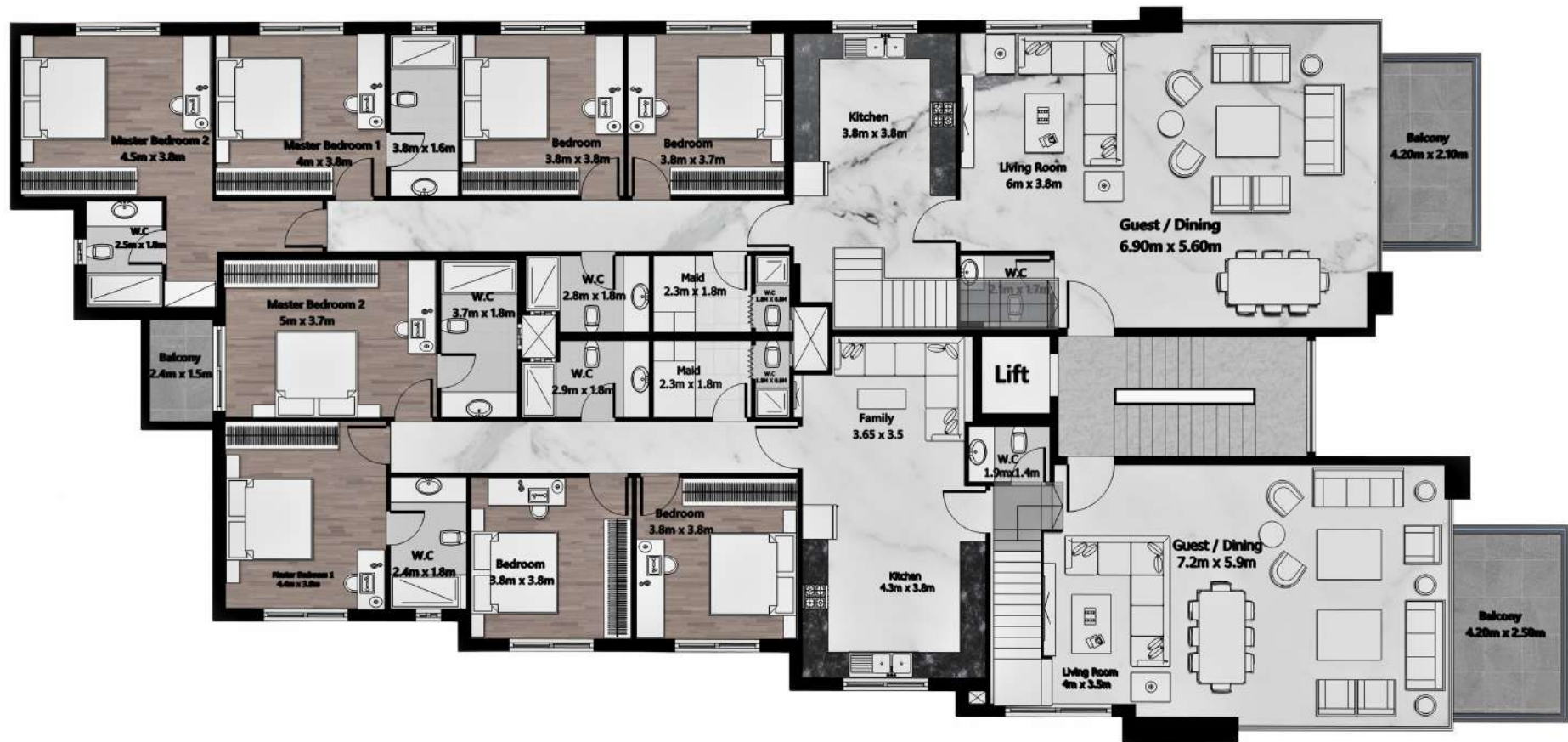
*AREAS LISTED ABOVE = GROSS AREA

THIRD FLOOR (DUPLICATE)



APARTMENT #R01 | 275 M²

APARTMENT #R02 | 275 M²



*AREAS LISTED ABOVE = GROSS AREA

ROOF FLOOR (DUPLEX)

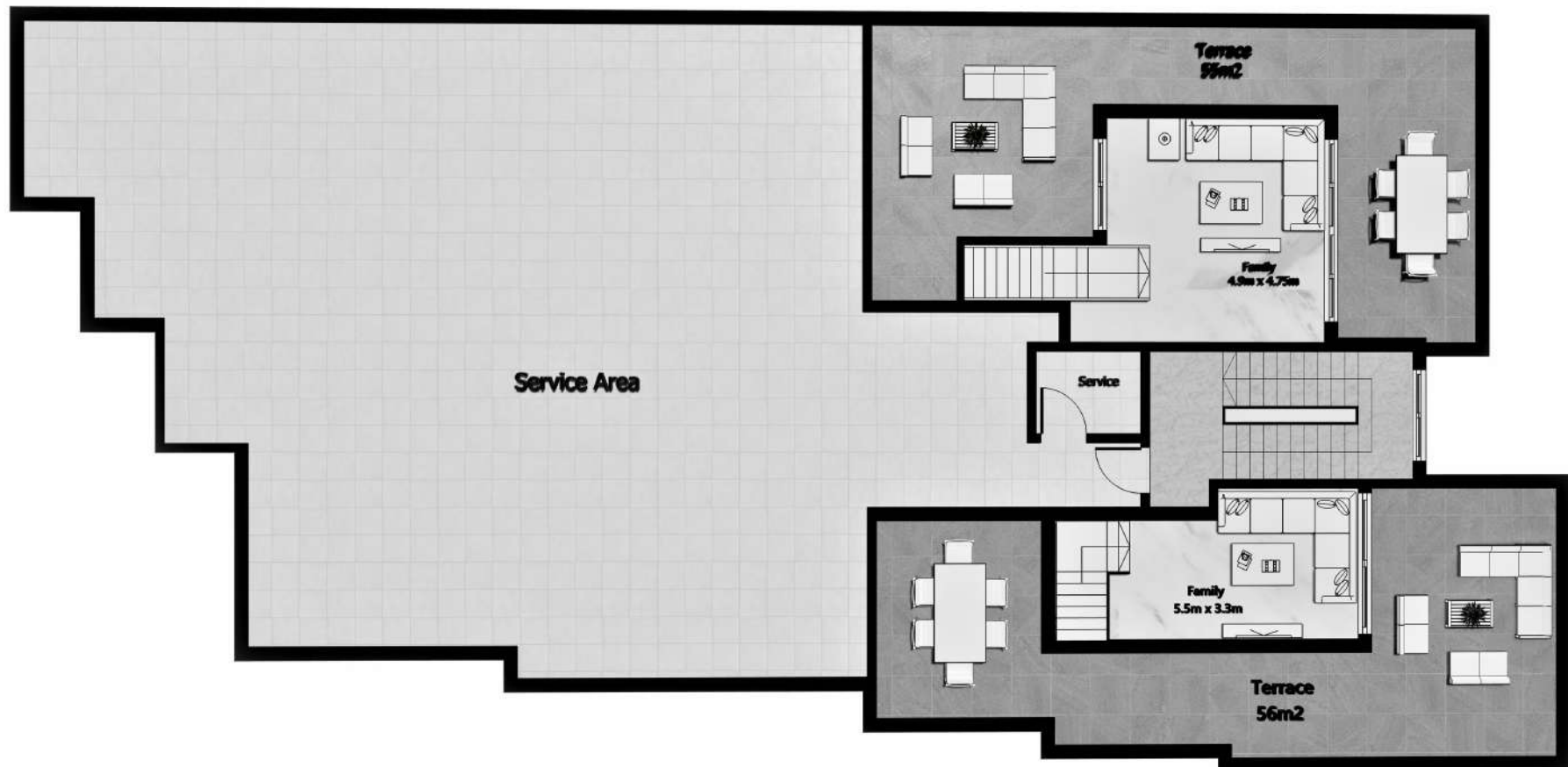


APARTMENT #R01

| 275 M²

APARTMENT #R02

| 275 M²



*AREAS LISTED ABOVE = GROSS AREA

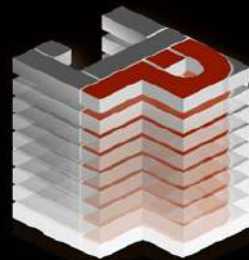
CONTACT US

DIRECT: + 962 (79) 7 33 66 11
+ 962 (79) 7 315 315
TEL: + 962 (6) 46 222 06
ADDRESS: BUILDING 14. QUEEN MESBAH ST.
AMMAN - JORDAN
EMAIL: SALES@JORDAN-PROPERTIES.NET
WEBSITE: WWW.JORDAN-PROPERTIES.NET
WWW.KRAIGROUP.COM

LUXURY DEVELOPMENT

ICON
RESIDENCE
AMMAN - JORDAN

LEADING DEVELOPER



شركة أملاك الأردن ذ.م.م
JORDAN PROPERTIES L.t.d

PRESTIGIOUS GROUP

RAIGROUP
— EST. 1990 —