

AYANA

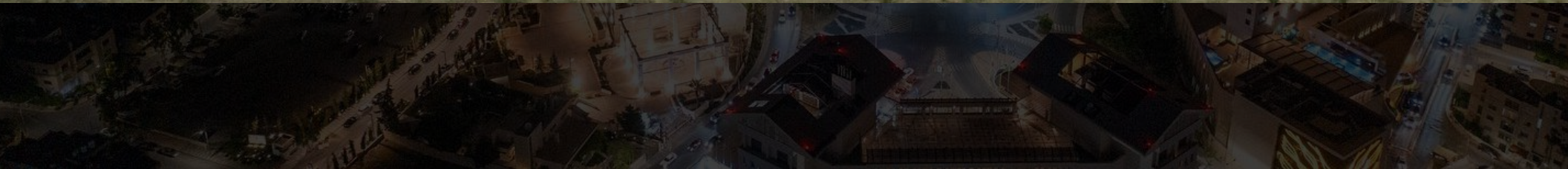
R E S I D E N C E S

A M M A N - J O R D A N

PRIME LOCATION IN 5TH CIRCLE



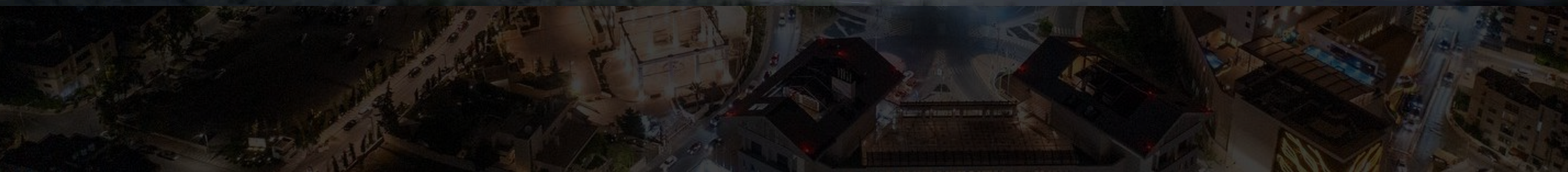
ICONIC DEVELOPMENT



STATE OF THE ART DESIGN



SECURED NEIGHBORHOOD



AYANA - NORTH



AYANA - NORTH



AYANA - NORTH



AYANA NORTH - BASEMENT FLOOR

SERVICES AREA

APARTMENT <N-B01> | 230 M2



AREAS LISTED ABOVE = GROSS AREA

████████████████████

APARTMENT <N-G01> | 200 M2

APARTMENT <N-G02> | 230 M2

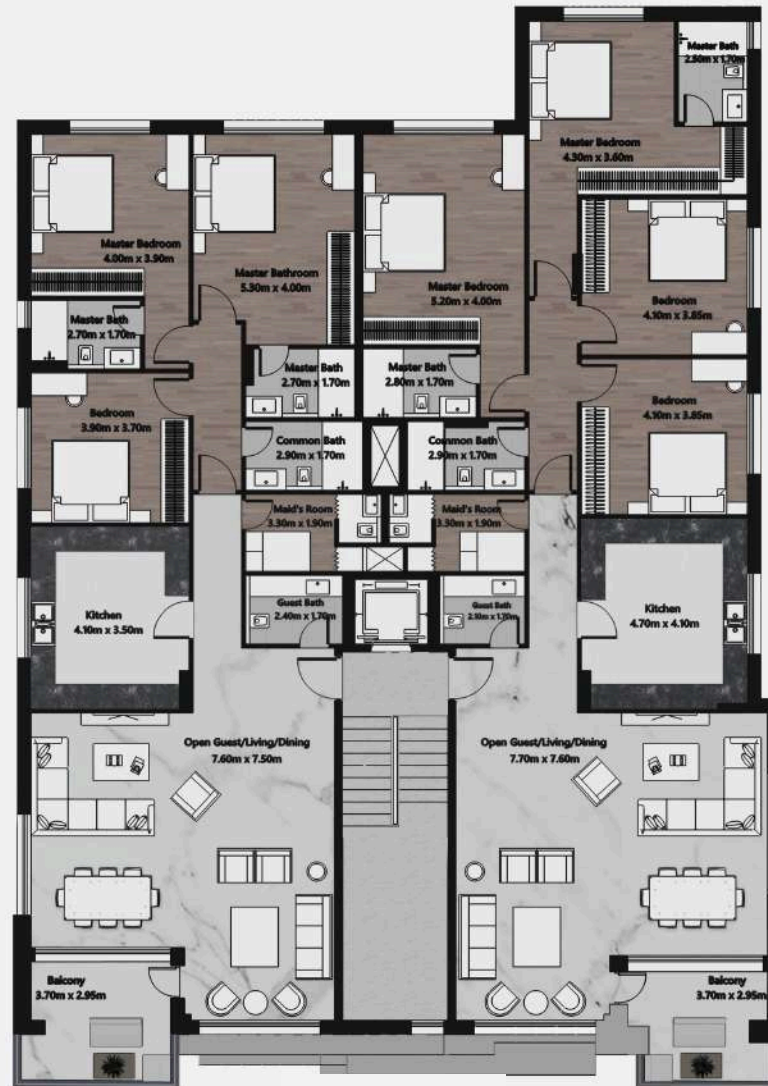


AREAS LISTED ABOVE = GROSS AREA

AYANA NORTH - FIRST FLOOR

APARTMENT <N-F01> | 200 M2

APARTMENT <N-F02> | 230 M2

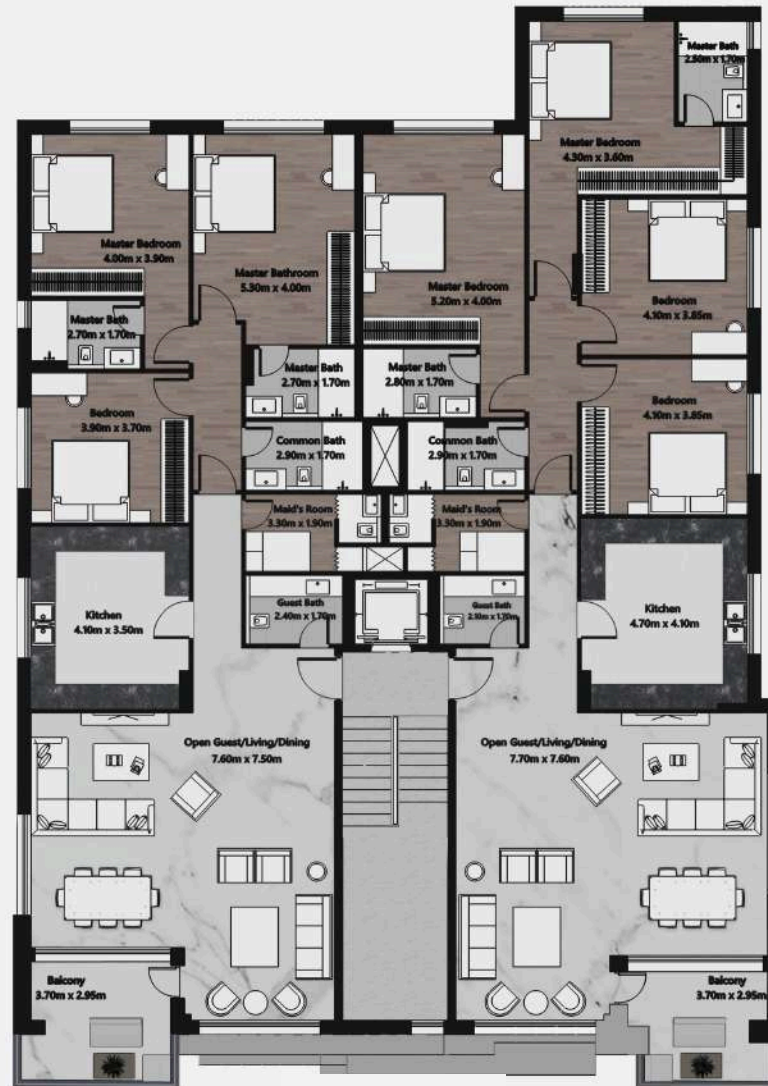


AREAS LISTED ABOVE = GROSS AREA

AYANA NORTH - SECOND FLOOR

APARTMENT <N-S01> | 200 M2

APARTMENT <N-S02> | 230 M2

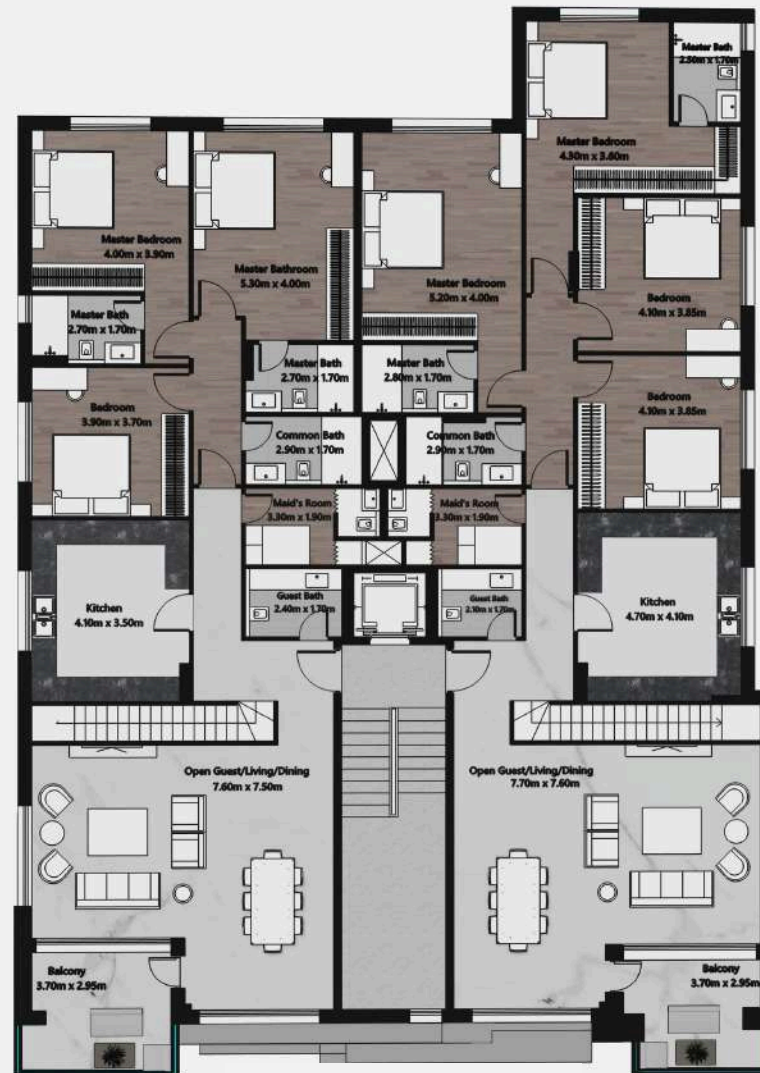


AREAS LISTED ABOVE = GROSS AREA

AYANA NORTH - THIRD FLOOR (DUPLICATE)

APARTMENT <N-R01> | 230 M2

APARTMENT <N-R02> | 250 M2

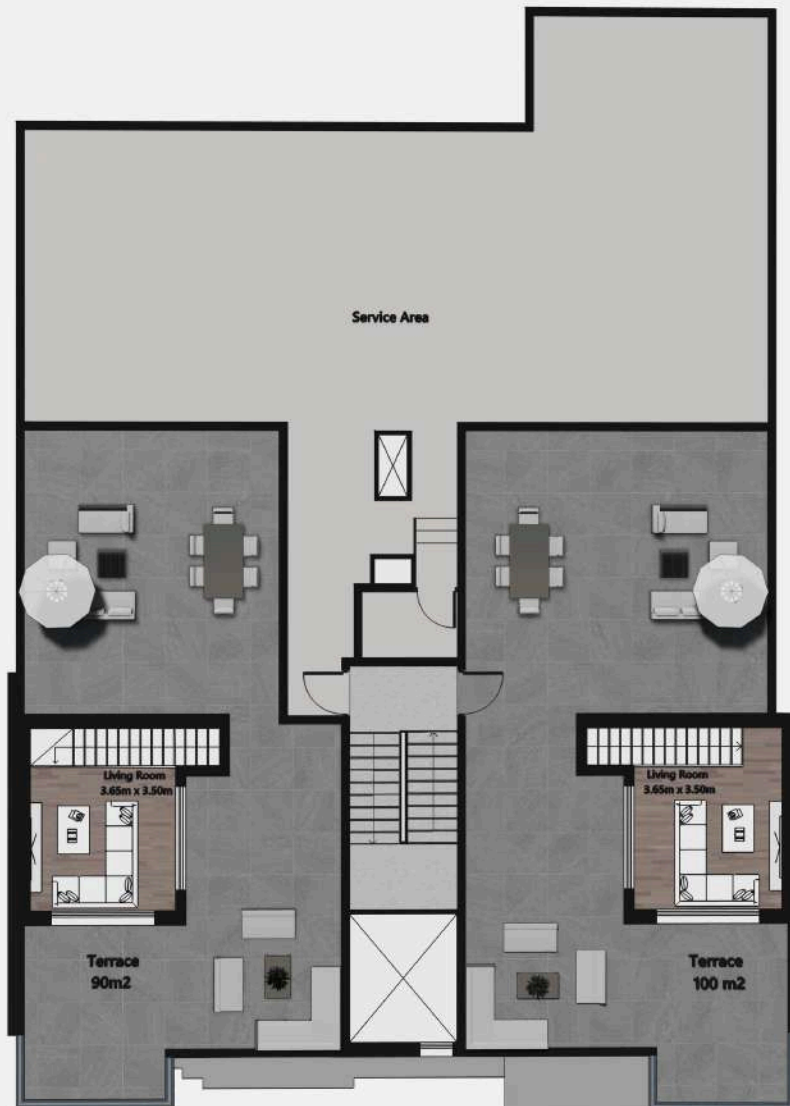


AREAS LISTED ABOVE = GROSS AREA

AYANA NORTH - ROOF FLOOR (DUPLEX)

APARTMENT <N-R01> | 230 M2

APARTMENT <N-R02> | 250 M2



AREAS LISTED ABOVE = GROSS AREA

— AYANA - SOUTH



— AYANA - SOUTH



— AYANA - SOUTH



AYANA SOUTH - BASEMENT FLOOR

APARTMENT <S-B01> | 230 M2

SERVICES AREA



AREAS LISTED ABOVE = GROSS AREA

AYANA SOUTH - GROUND FLOOR

APARTMENT <S-G01> | 230 M2

APARTMENT <S-G02> | 200 M2



AREAS LISTED ABOVE = GROSS AREA

AYANA SOUTH - FIRST FLOOR

APARTMENT <S-F01> | 230 M2

APARTMENT <S-F02> | 200 M2



AREAS LISTED ABOVE = GROSS AREA

AYANA SOUTH - FIRST FLOOR

APARTMENT <S-S01> | 230 M2

APARTMENT <S-S02> | 200 M2

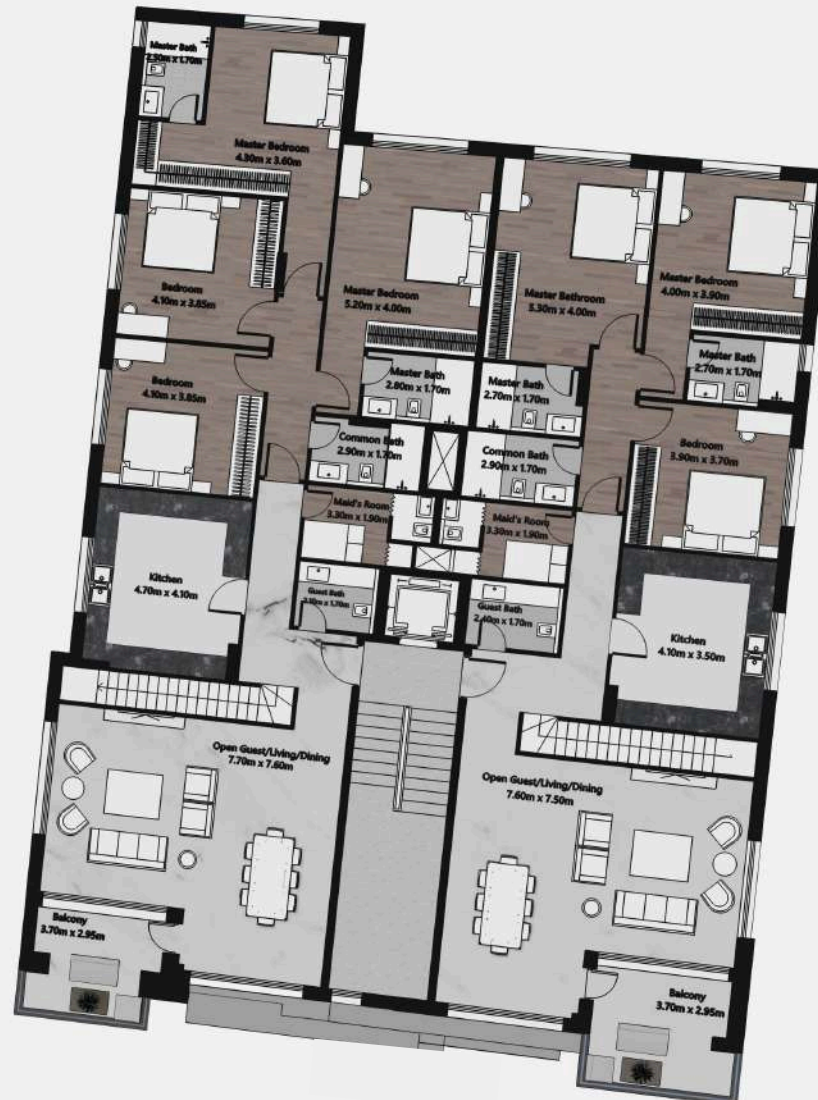


AREAS LISTED ABOVE = GROSS AREA

AYANA SOUTH - THIRD FLOOR (DUPLEX)

APARTMENT <S-R01> | 250 M2

APARTMENT <S-R02> | 230 M2

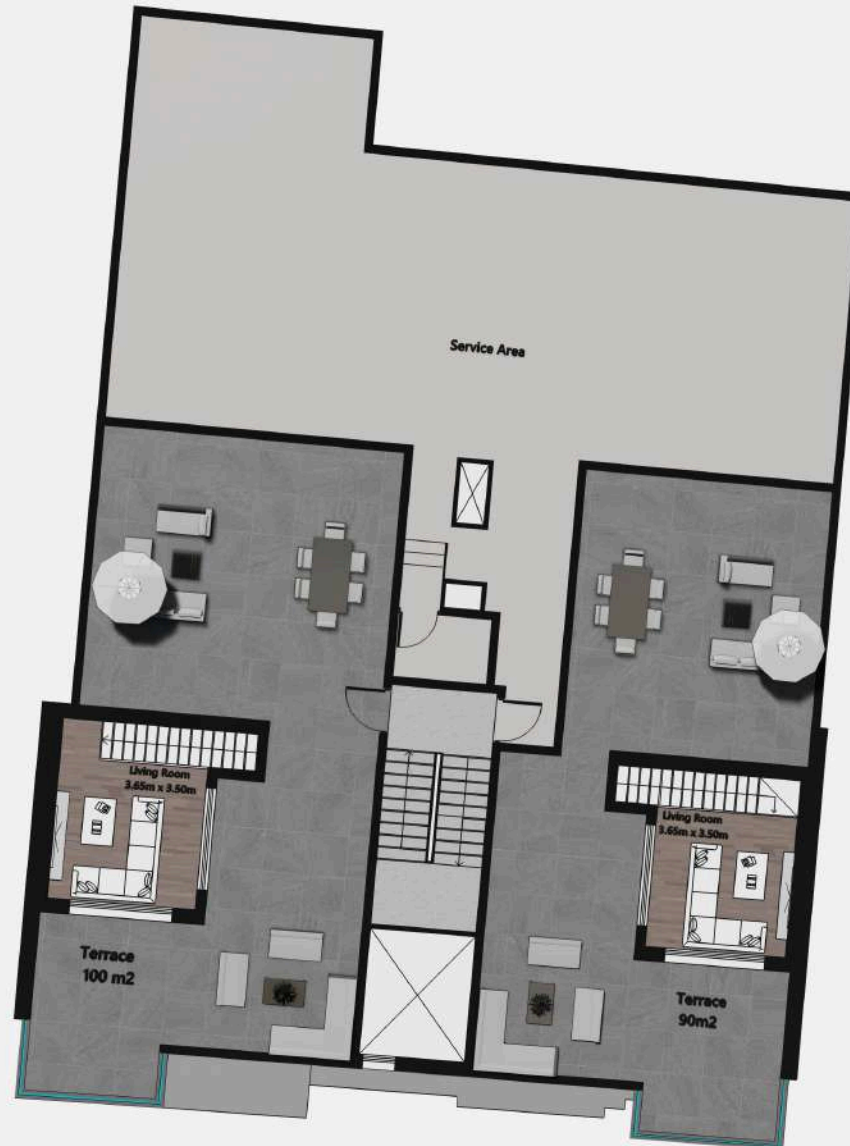


AREAS LISTED ABOVE = GROSS AREA

AYANA SOUTH - ROOF FLOOR (DUPLEX)

APARTMENT <S-R01> | 250 M2

APARTMENT <S-R02> | 230 M2



AREAS LISTED ABOVE = GROSS AREA

CONTACT US

SALES: + 962 (79) 7 33 66 11

HQ JORDAN: + 962 (6) 46 222 06

ADDRESS: BUILDING 14. QUEEN MESBAH ST.
AMMAN - JORDAN

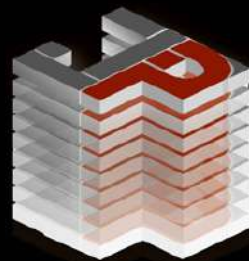
EMAIL: SALES@JORDAN-PROPERTIES.NET

WEBSITE: WWW.JORDAN-PROPERTIES.NET
WWW.KRAIGROUP.COM

LUXURY DEVELOPMENT

AYANA
RESIDENCES
AMMAN - JORDAN

LEADING DEVELOPER



شركة أملاك الأردن ذ.م.م
JORDAN PROPERTIES L.t.d

PRESTIGIOUS GROUP

RAI GROUP
— EST. 1990 —