

# ABDOUN TERRACES

L U X U R Y   L I V I N G



# PRIME LOCATION IN ABDOUN

---





# ICONIC DEVELOPMENT

---



# LAND ON TWO ROADS

---





# SUPERIOR QUALITY

---



# UNPARARALLED ELEGANCE

---





# LUXURY FINISHING

---





# PRIME LOCATION IN ABDOUN

---





# DIPLOMATIC NEIGHBOURHOOD

---



# SECURED AREA

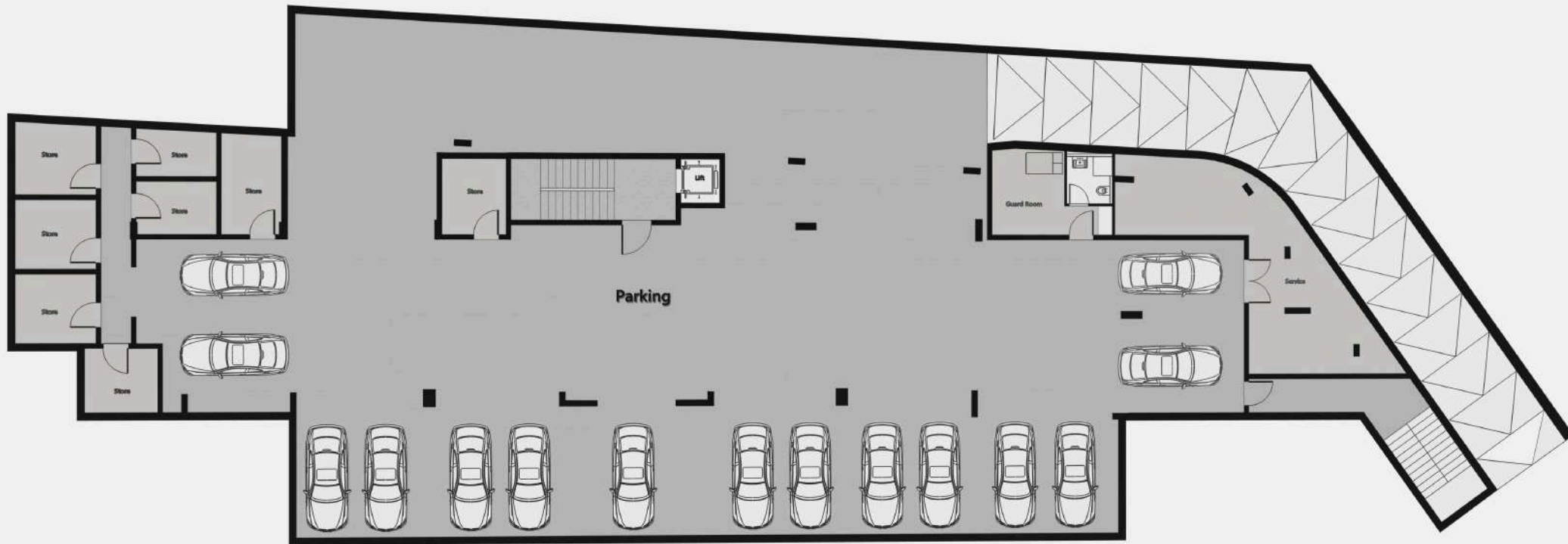
---





# SERVICES FLOOR

- PARKING LOTS
- WATER TANKS
- STORE ROOMS
- GUARD ROOM



# APARTMENT #101

**| 315 M2**

# APARTMENT #102

**| 325 M2**





# LEVEL 02

APARTMENT #201

| 305 M2

APARTMENT #202

| 315 M2



\*AREAS LISTED ABOVE = GROSS AREA NOT TITLE DEED AREA

# LEVEL 03

APARTMENT #301

| 305 M2

APARTMENT #302

| 315 M2



\*AREAS LISTED ABOVE = GROSS AREA NOT TITLE DEED AREA



# LEVEL 04

PENTHOUSE #400

| 315 M2



\*AREAS LISTED ABOVE = GROSS AREA NOT TITLE DEED AREA

# CONTACT US

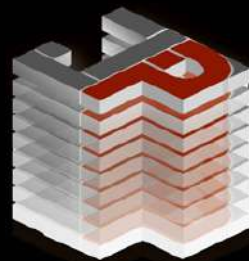
---

**DIRECT:** + 962 (79) 7 33 66 11  
+ 962 (79) 7 315 315  
**TEL:** + 962 (6) 46 222 06  
**ADDRESS:** BUILDING 14. QUEEN MESBAH ST.  
AMMAN - JORDAN  
**EMAIL:** SALES@JORDAN-PROPERTIES.NET  
**WEBSITE:** WWW.JORDAN-PROPERTIES.NET  
WWW.KRAIGROUP.COM

LUXURY DEVELOPMENT

**ABDOUN  
TERRACES**  
LUXURY LIVING

LEADING DEVELOPER



شركة أملاك الأردن ذ.م.م  
JORDAN PROPERTIES L.L.C

PRESTIGIOUS GROUP

**RAI GROUP**  
— EST. 1990 —